

THE MENTAL HEALTH BURDEN IN CANCER SURVIVORS

A DANISH POPULATION-BASED STUDY

Caroline Madsen Lager

*Department of Clinical Epidemiology, Department of Clinical Medicine, Aarhus University
and Aarhus University Hospital, Denmark*

27 September 2024

WCE

WORLD CONGRESS OF EPIDEMIOLOGY 2024





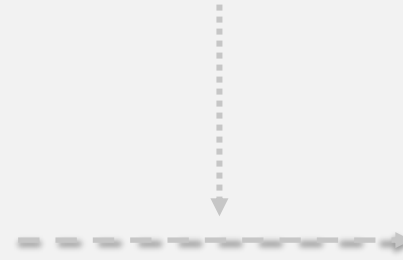
BACKGROUND



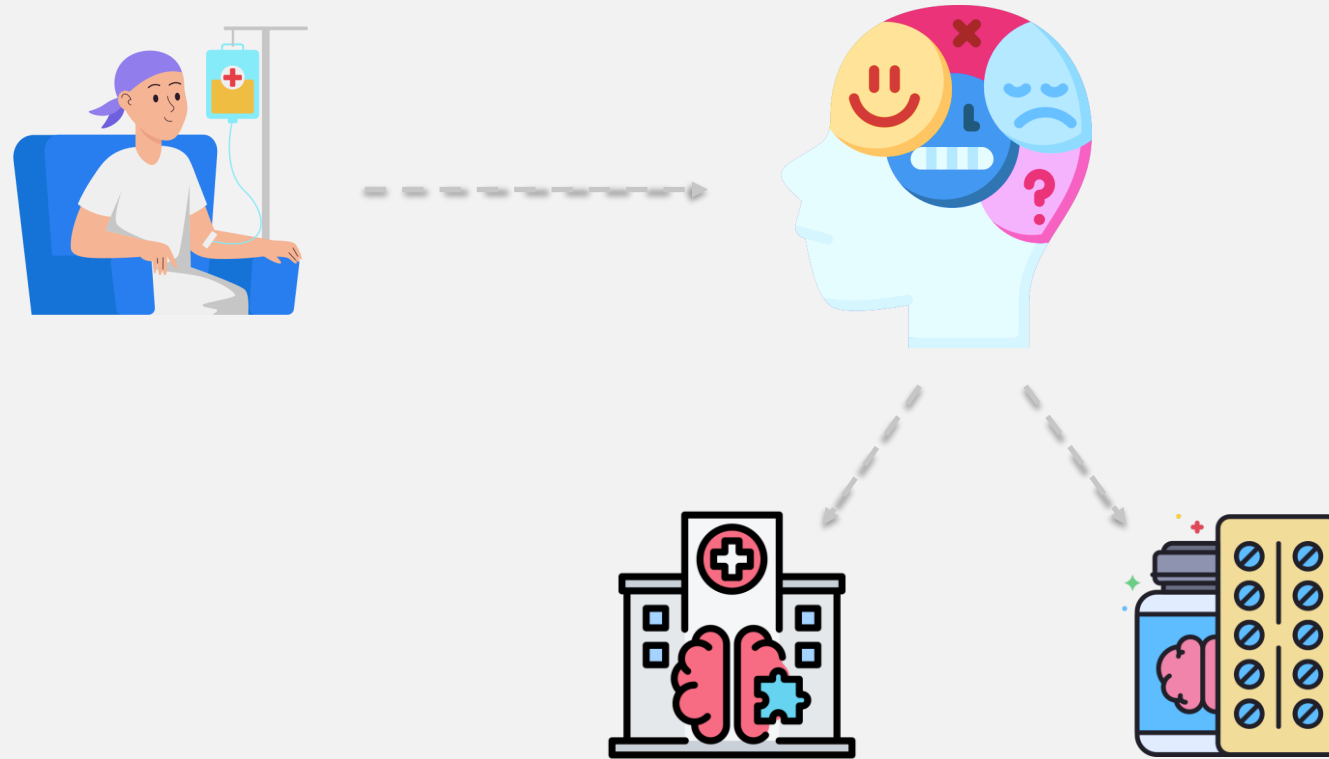
BACKGROUND



BACKGROUND



BACKGROUND





To compare the prevalence of depressive symptoms, perceived stress, and poor mental health in cancer survivors with individuals without cancer



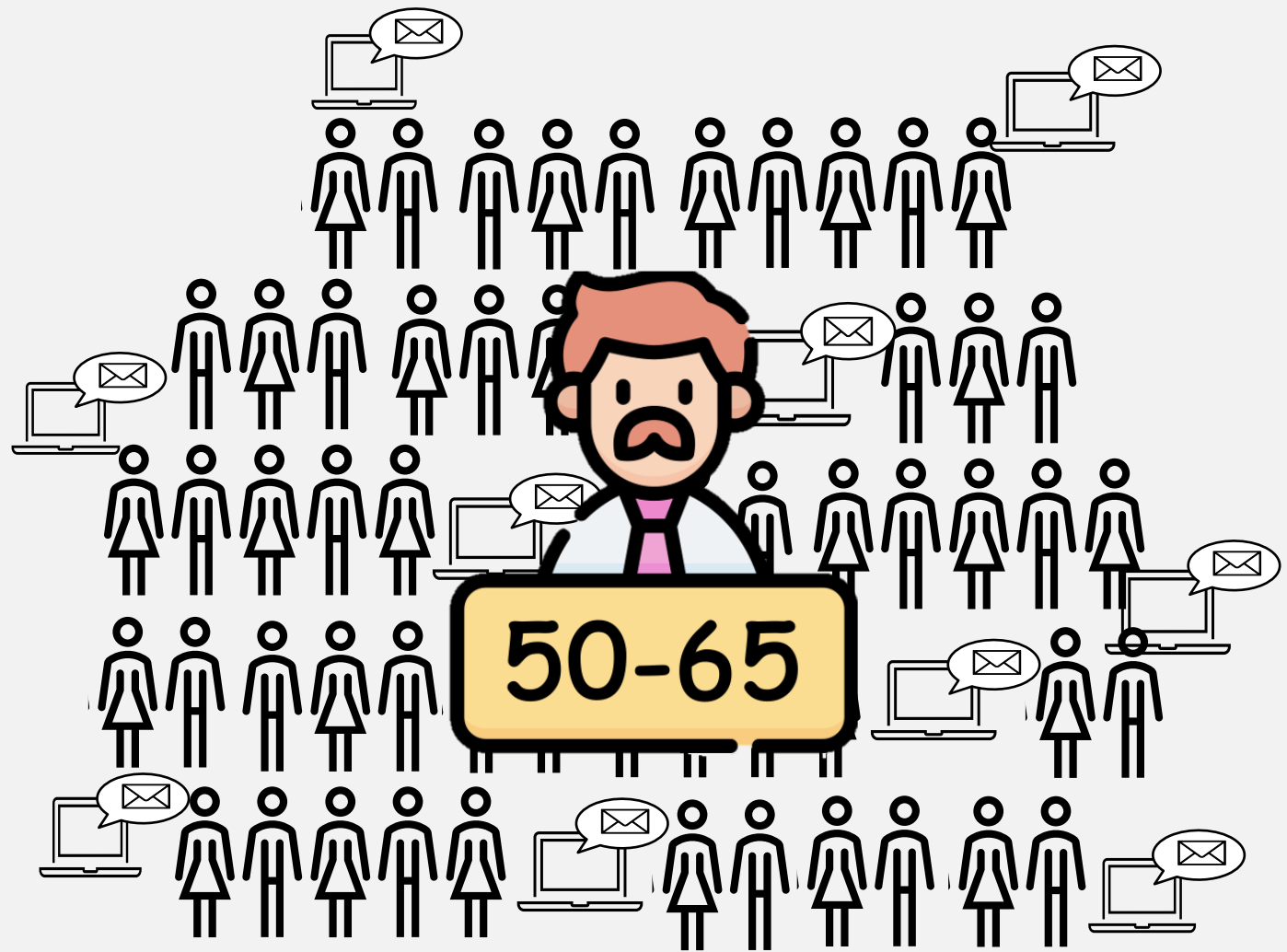
METHODS

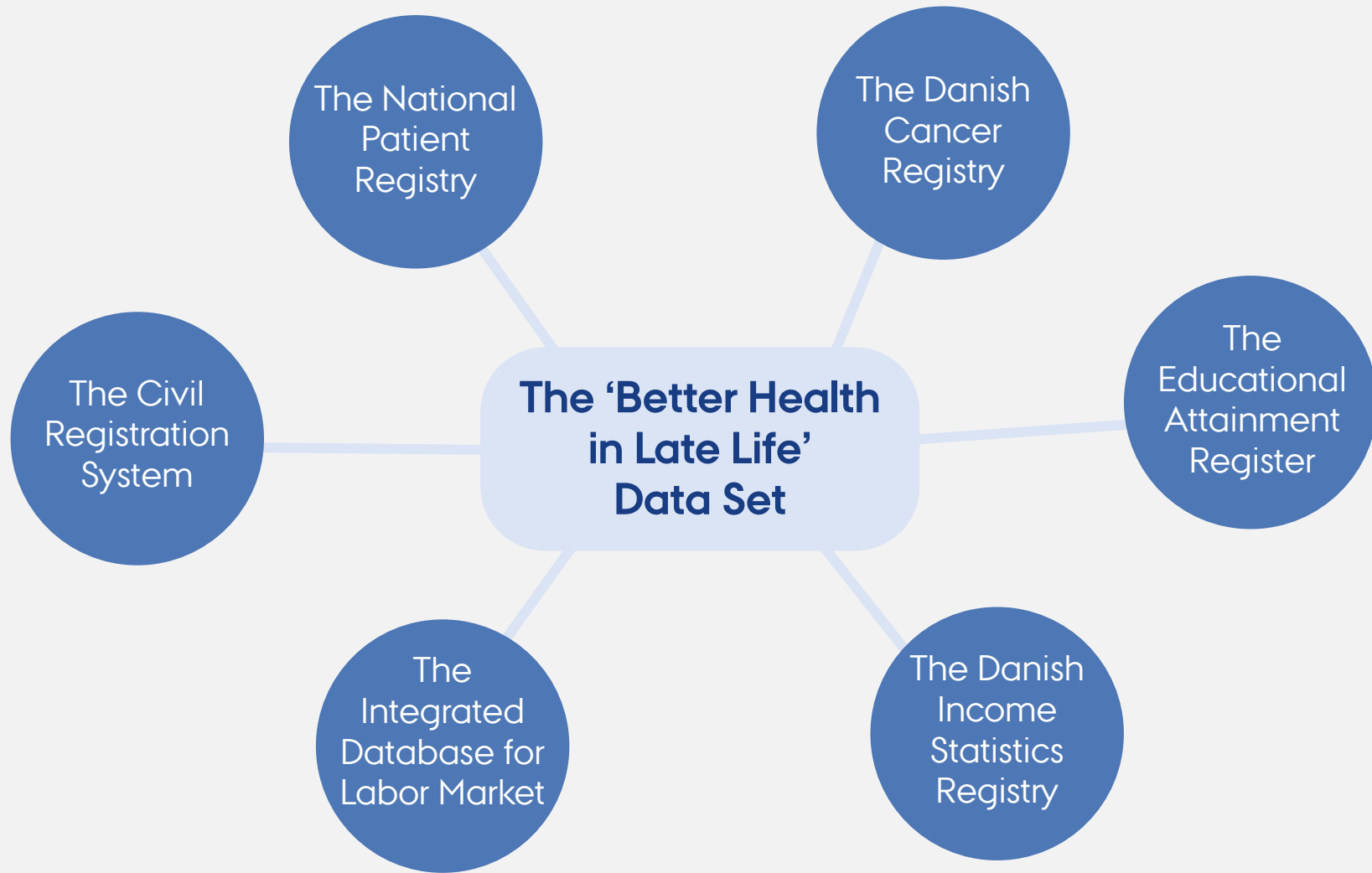


SURVEY

Better Health in Late Life

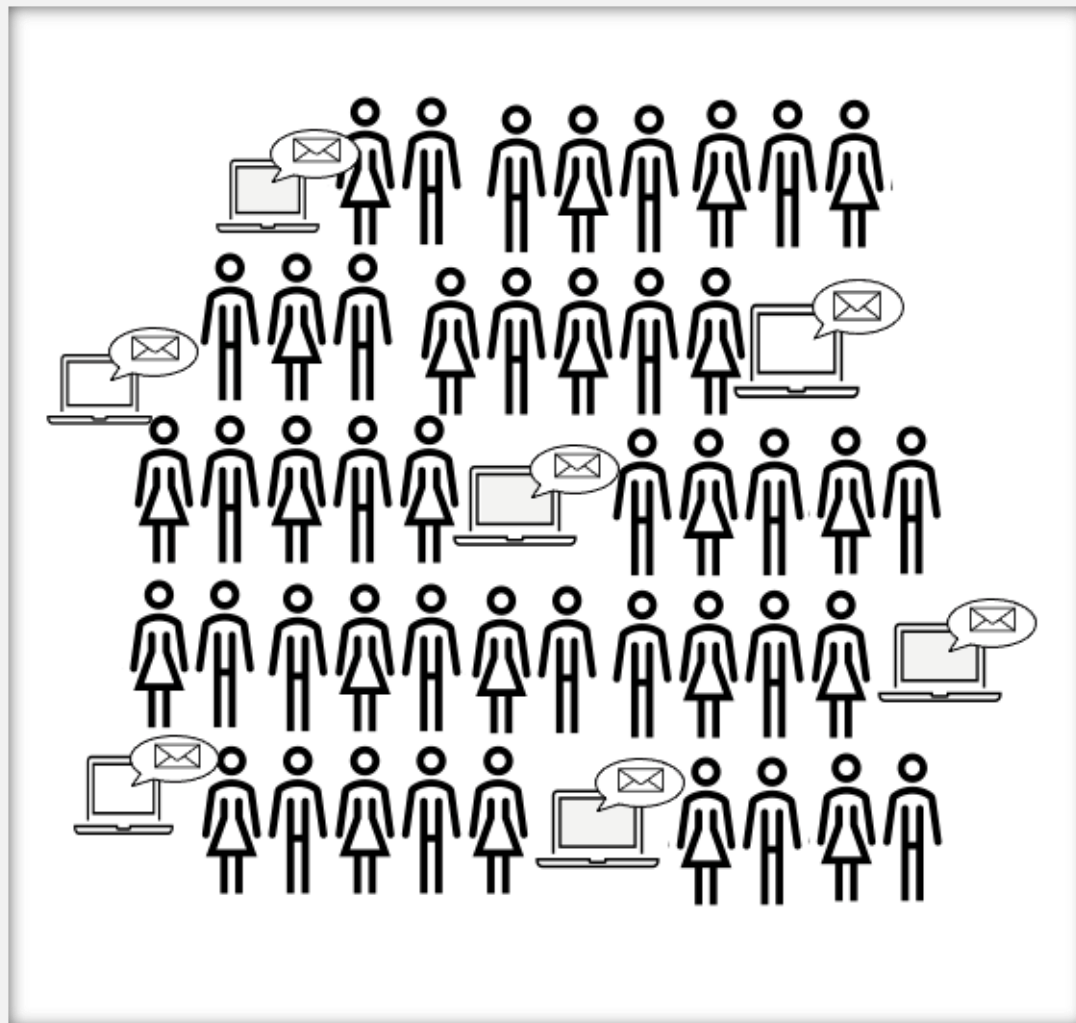


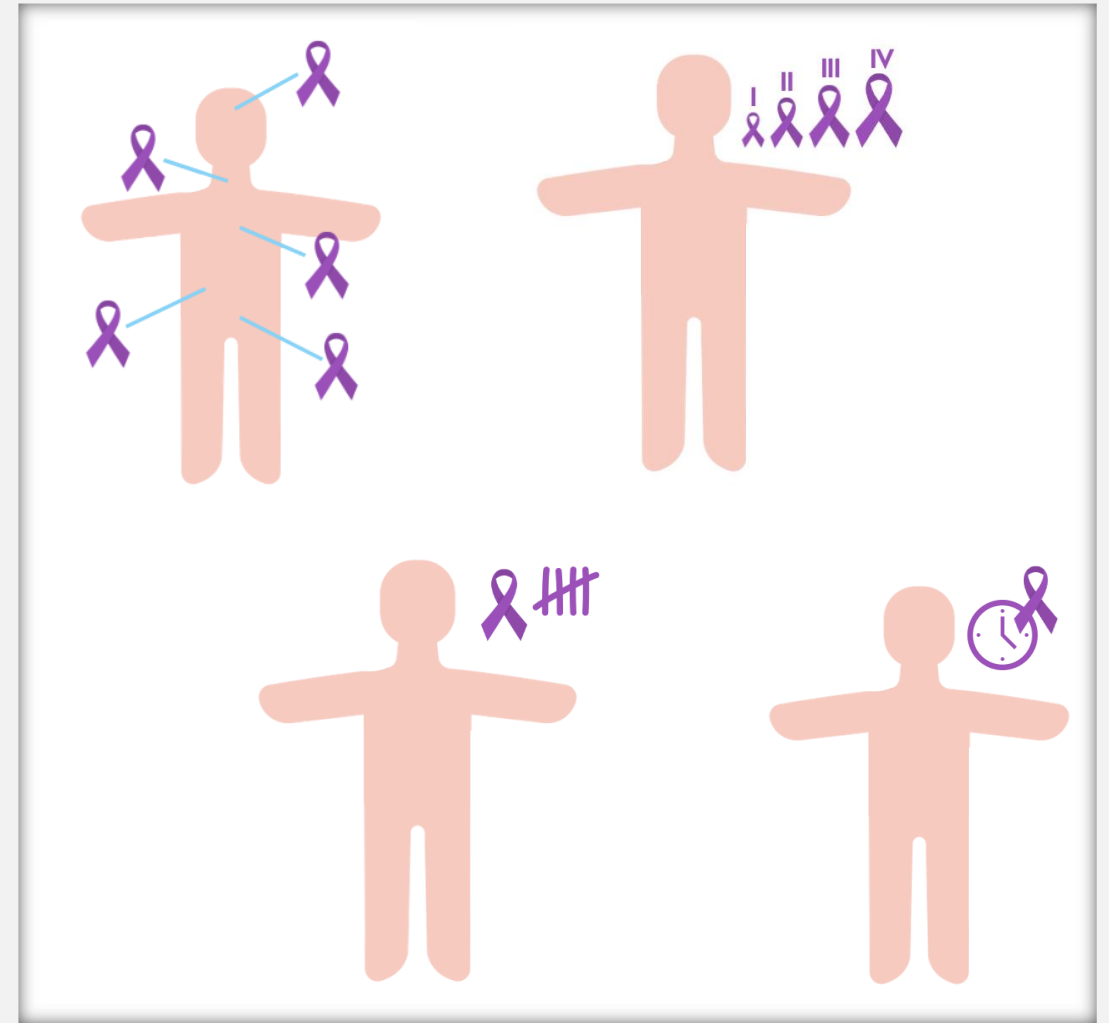
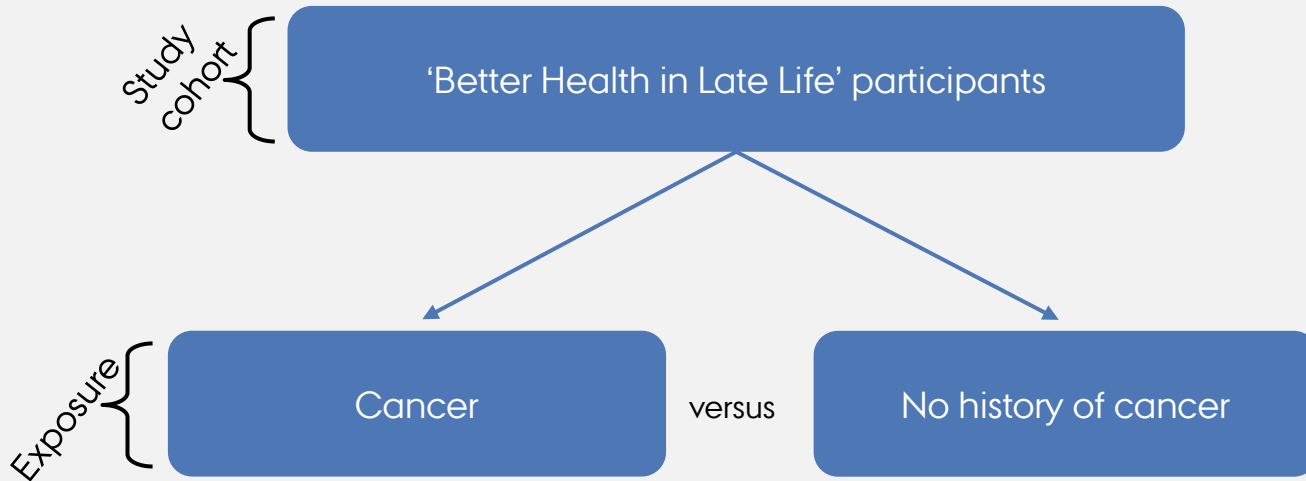


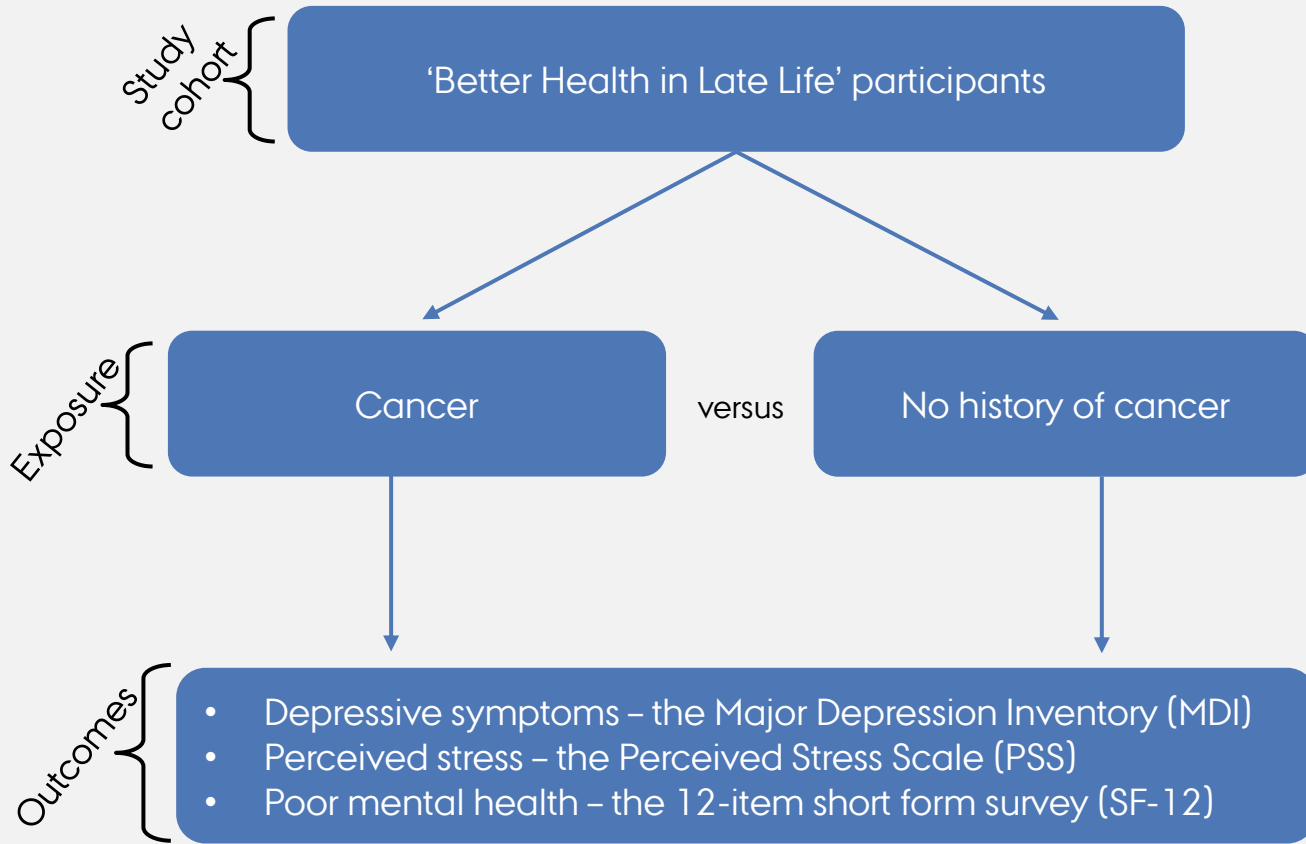


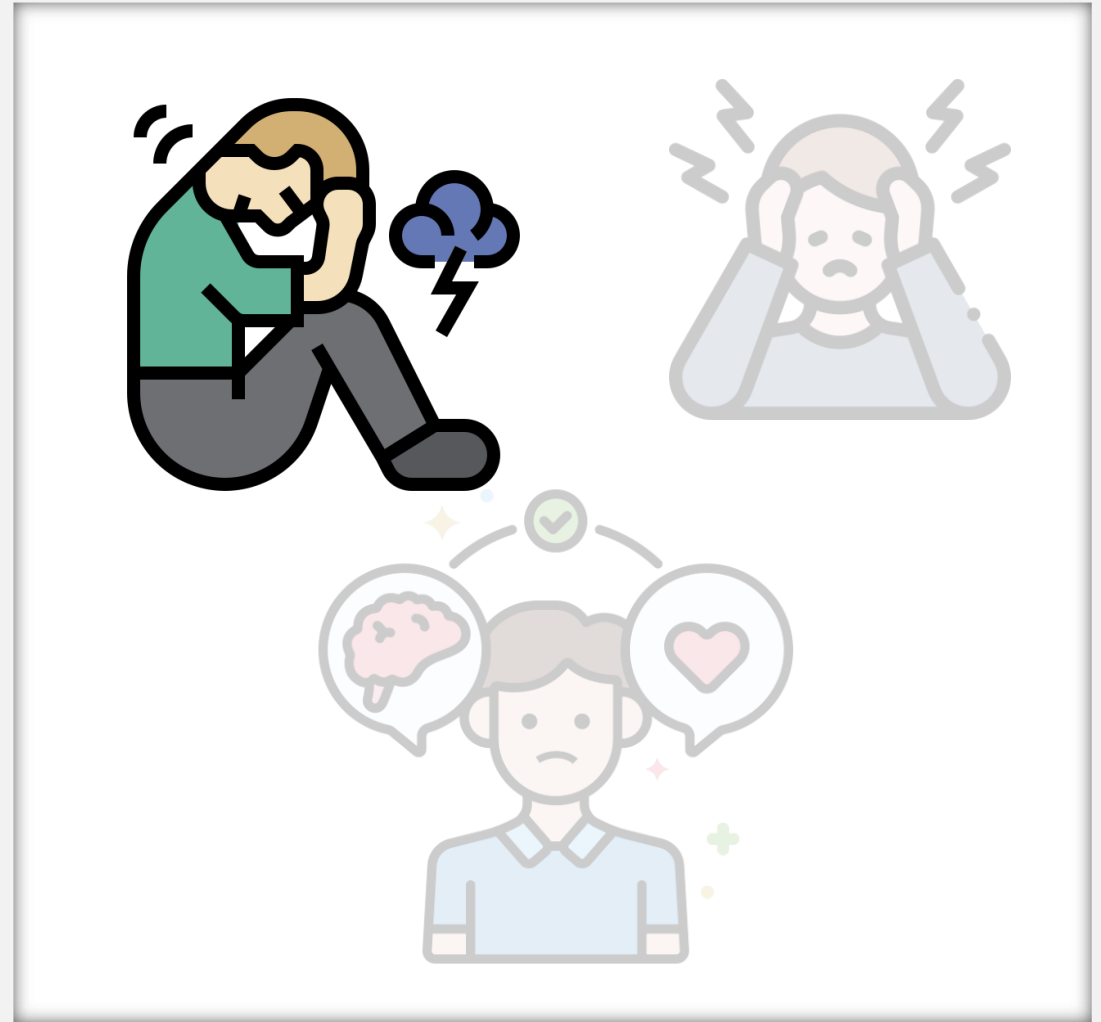
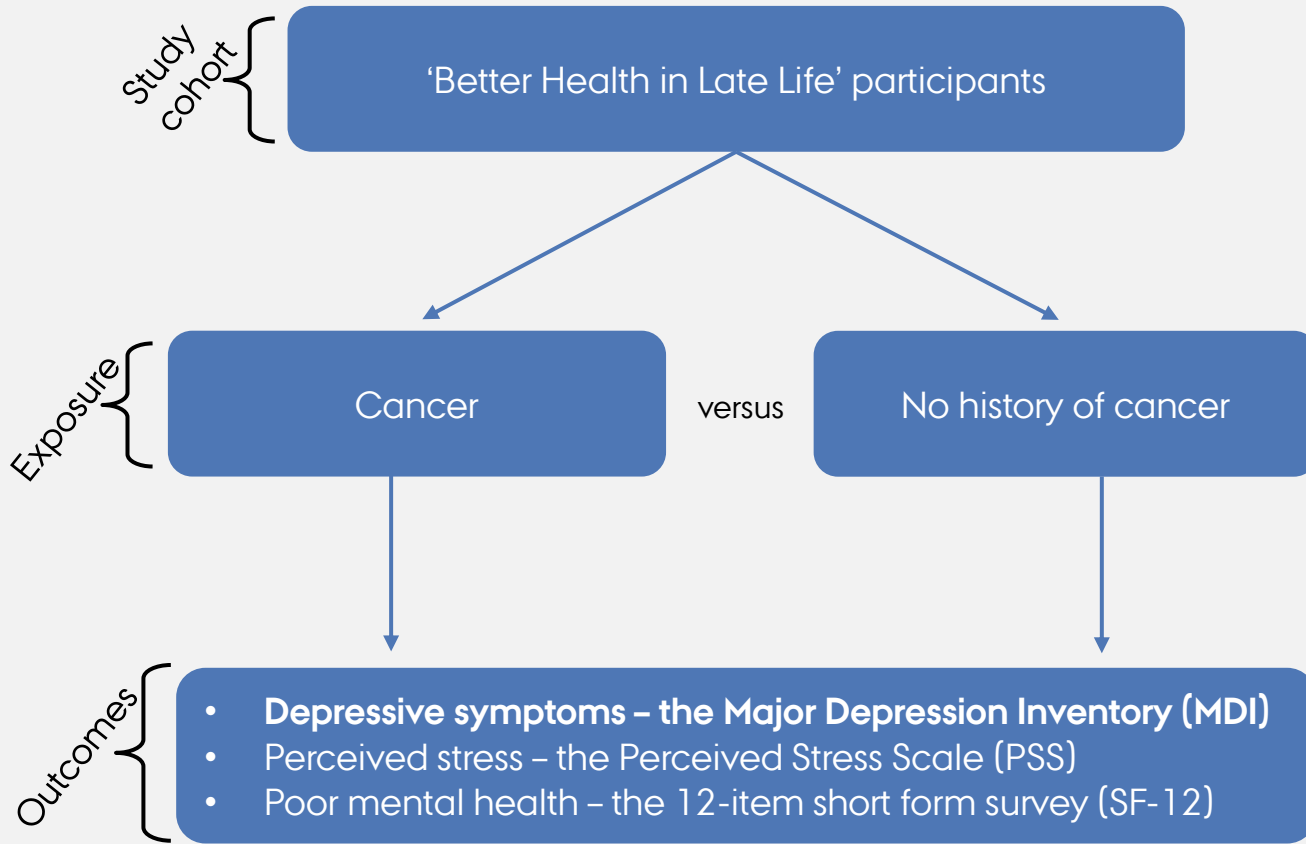
Study cohort

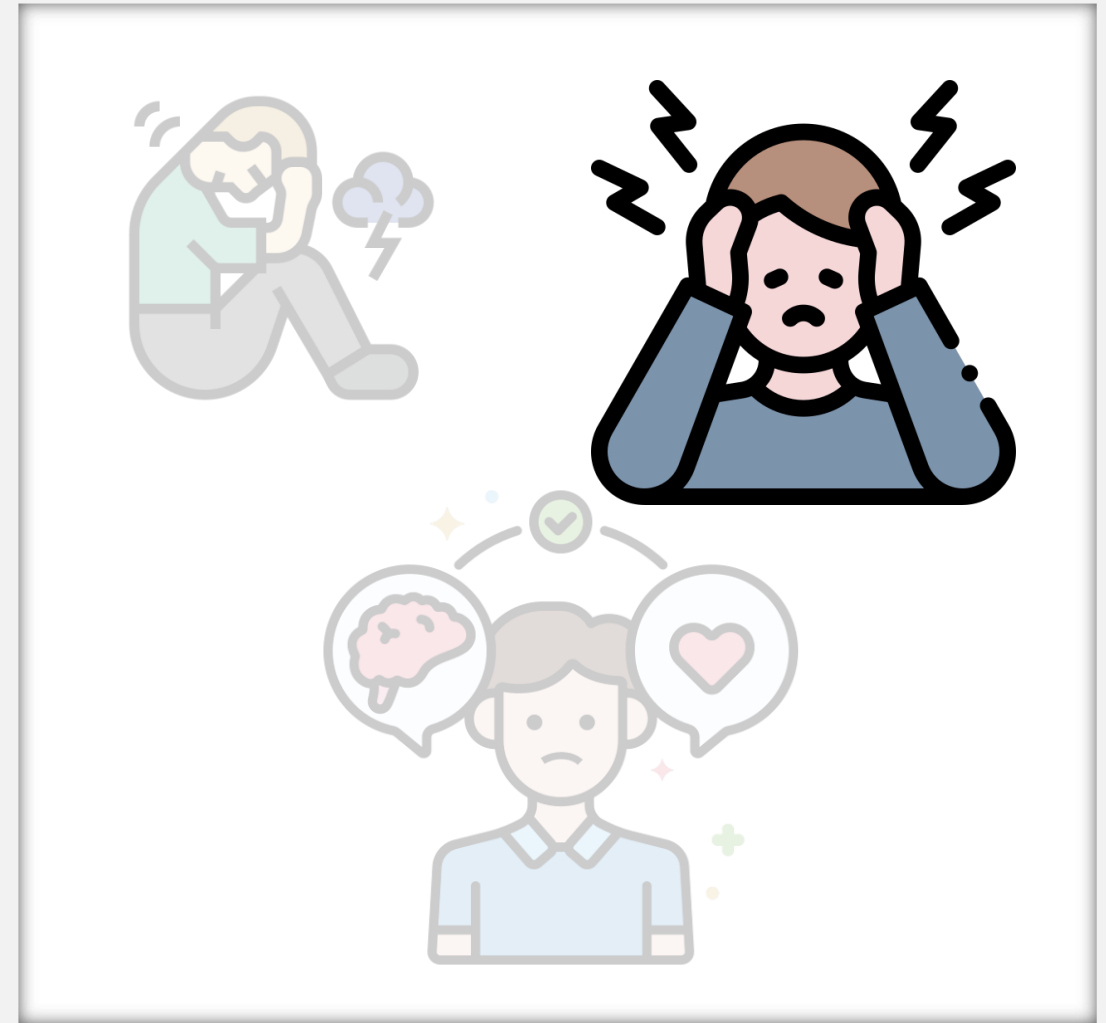
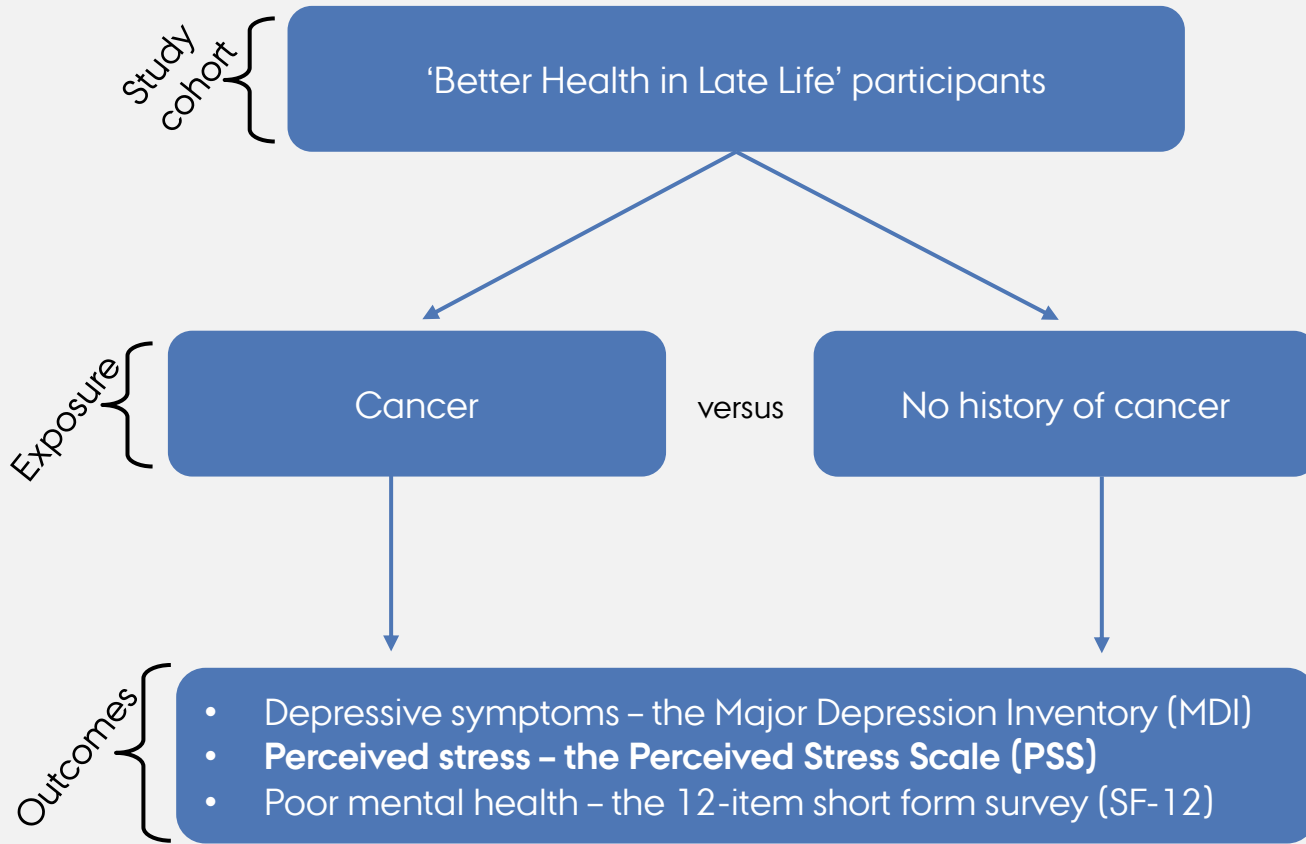
'Better Health in Late Life' participants

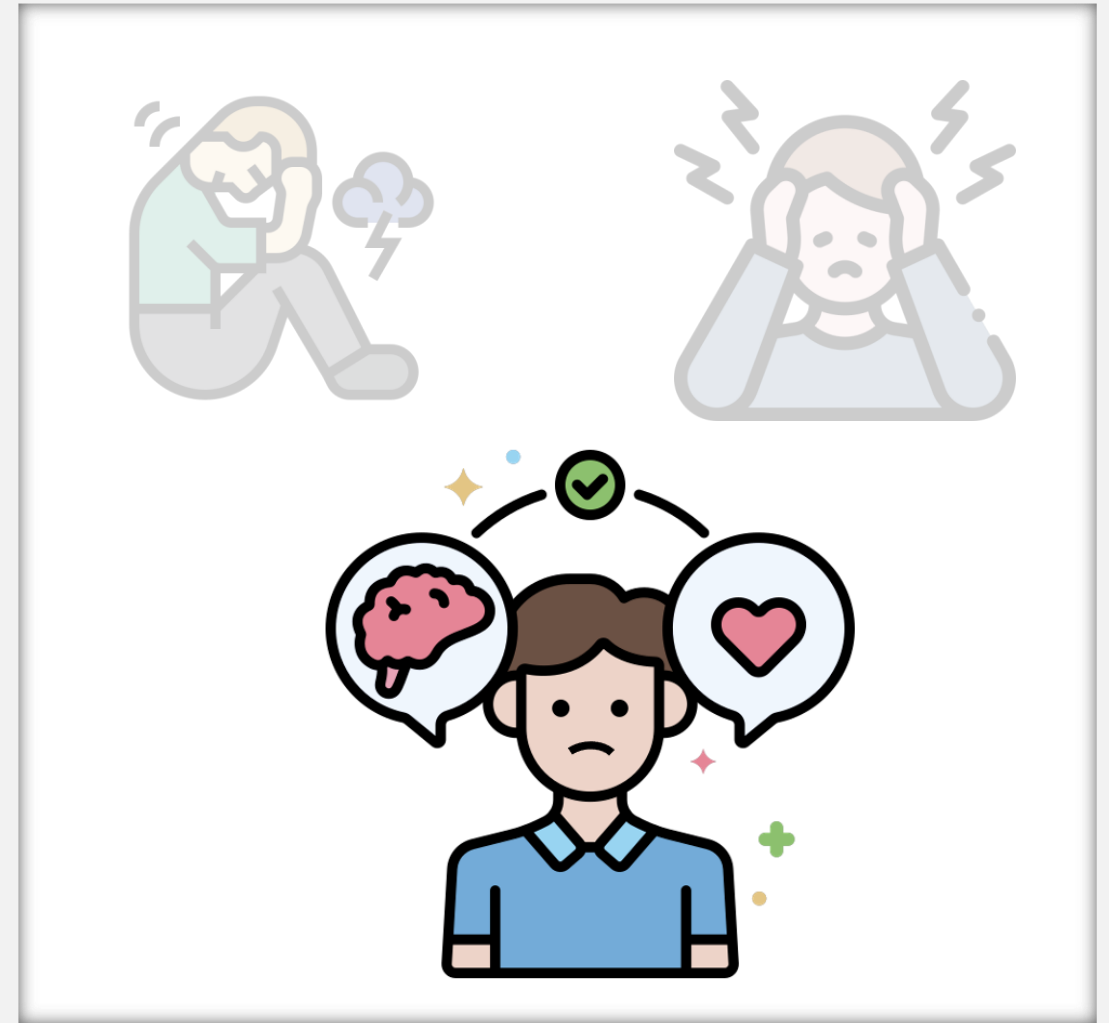
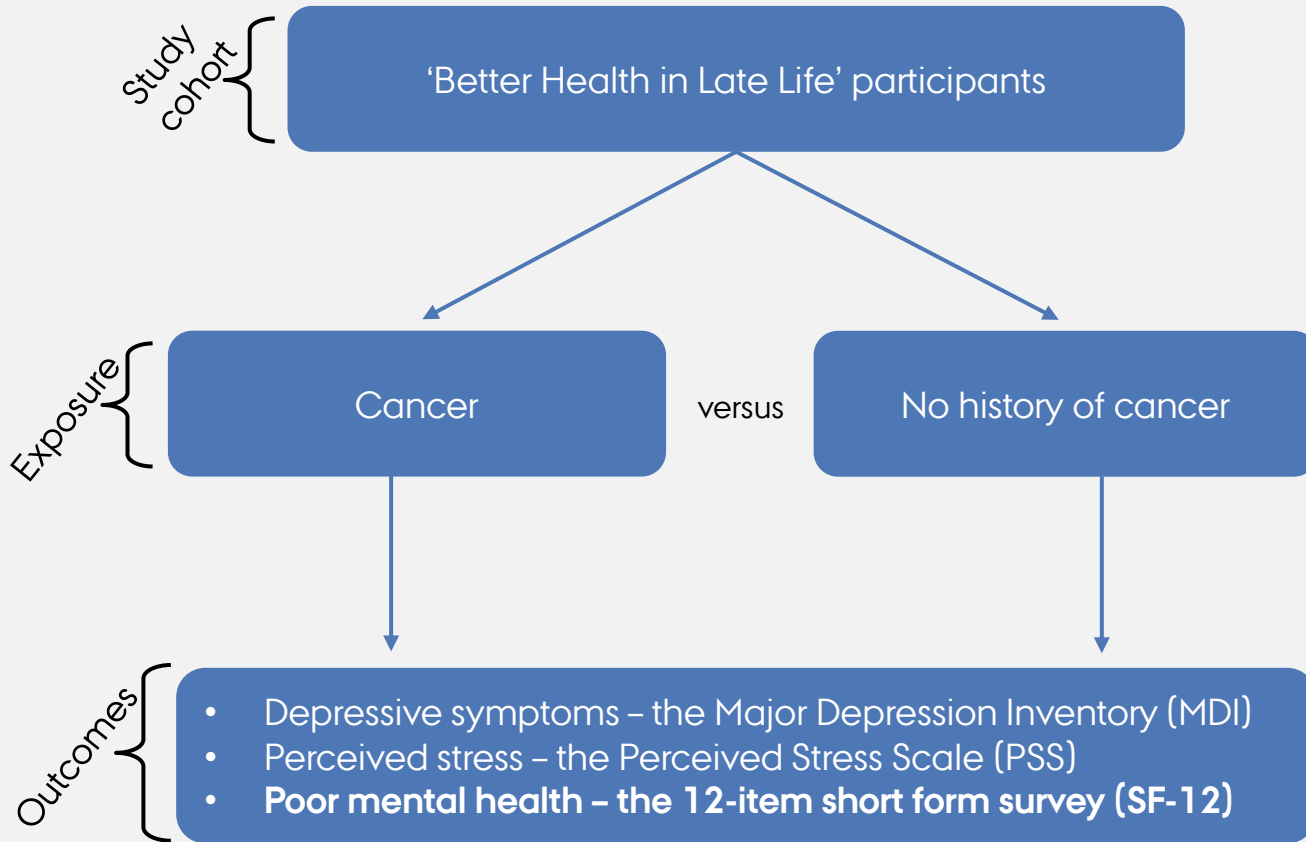






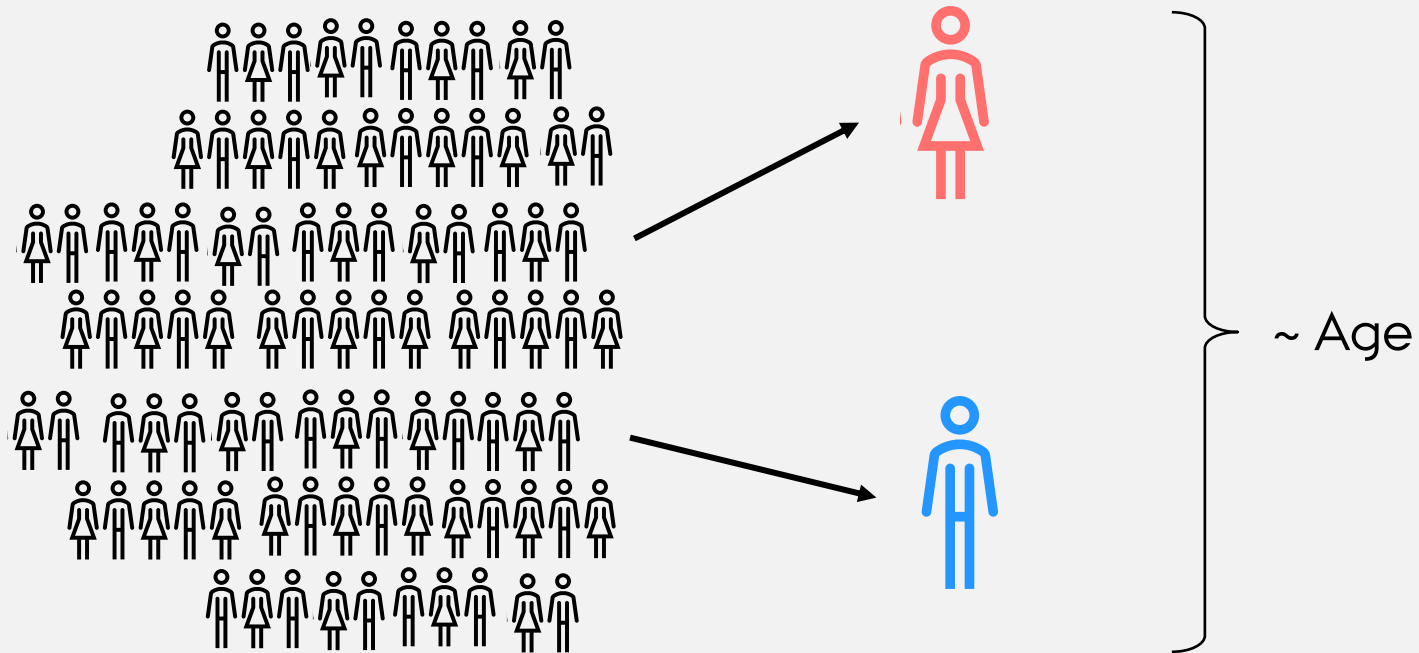







STATISTICAL ANALYSIS

Log-binomial method → prevalence ratios and 95% confidence intervals




COHORT CHARACTERISTICS

 Total cohort: 105,400 participants

 Women: 55%

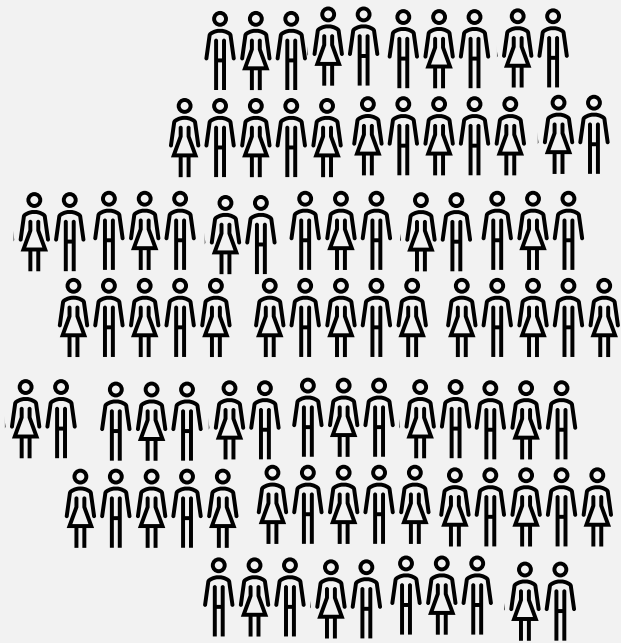
 Median age: 58 years

 Male participants:  ↑  ↑  ↑

 Cancer survivors:  ↑  ↑



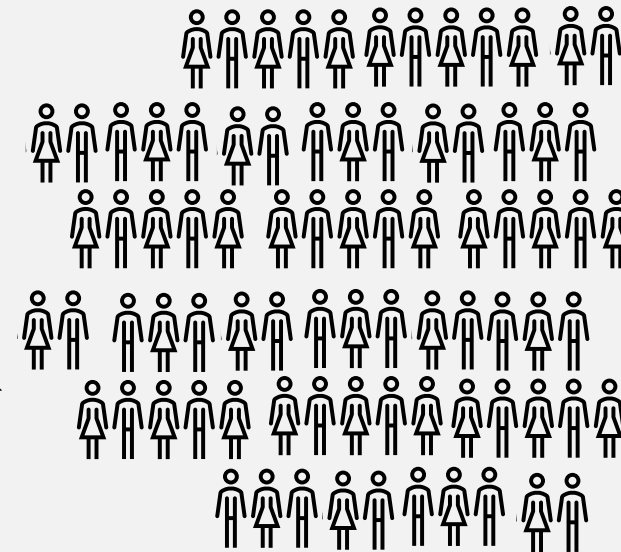
“Better Health in Late Life” cohort
n = 105,400

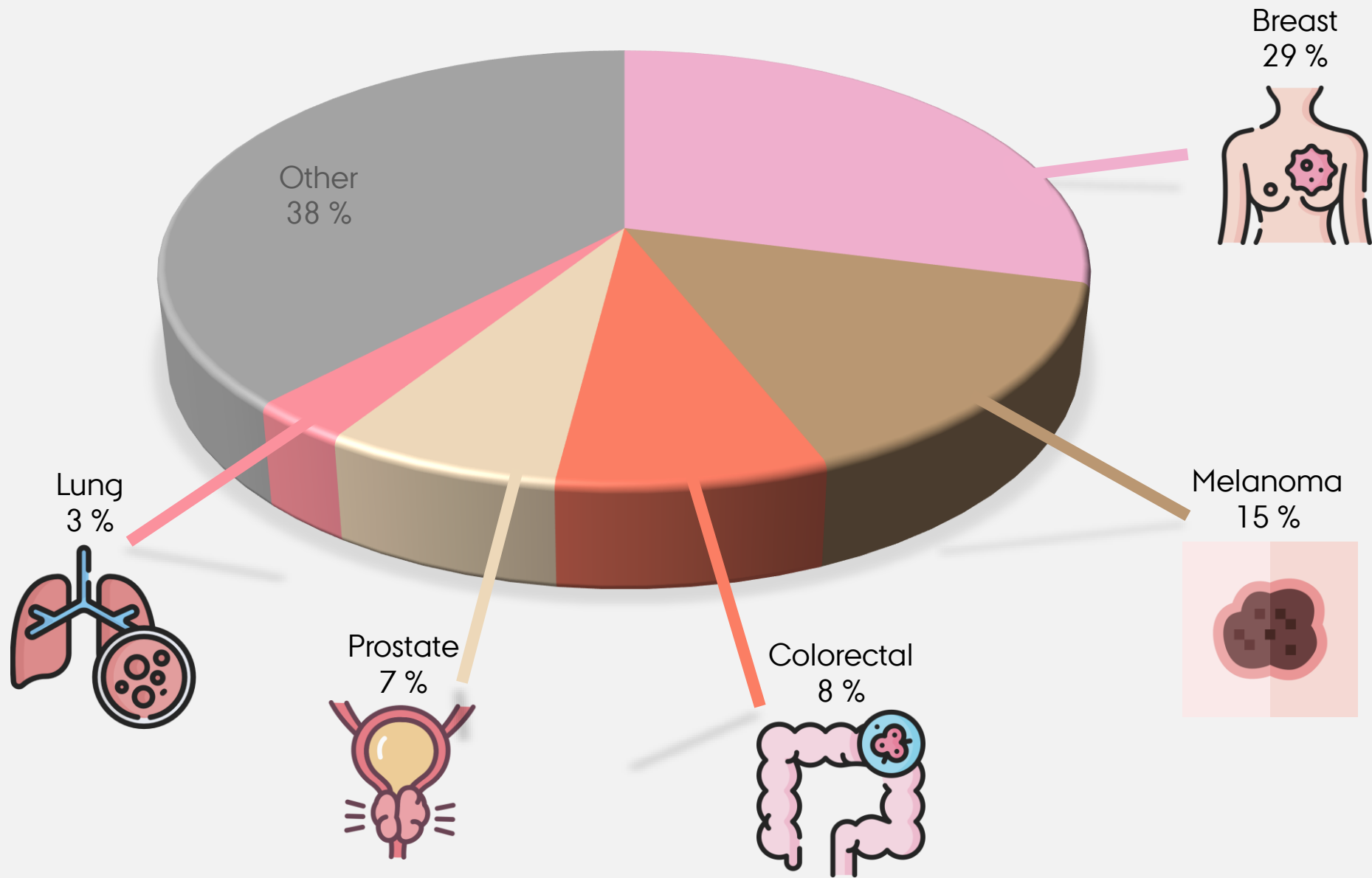


Cancer survivors
~7%

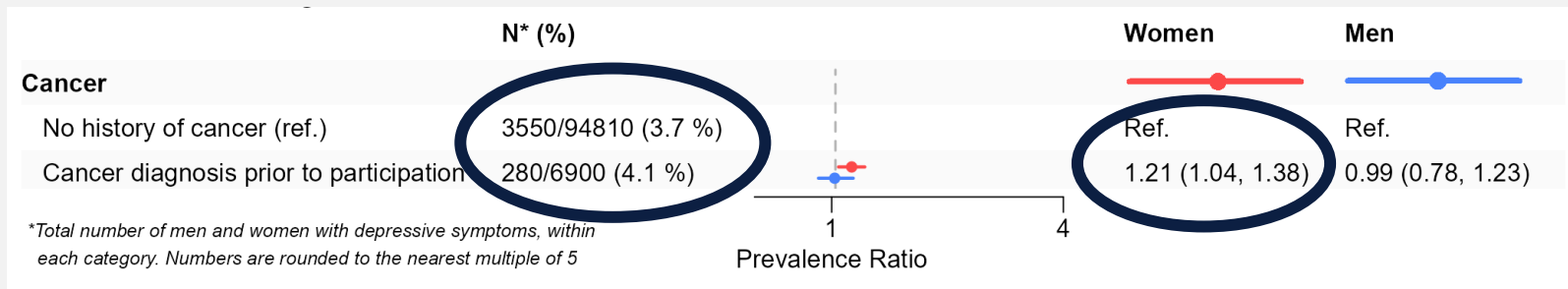


Cancer-free population
~93%

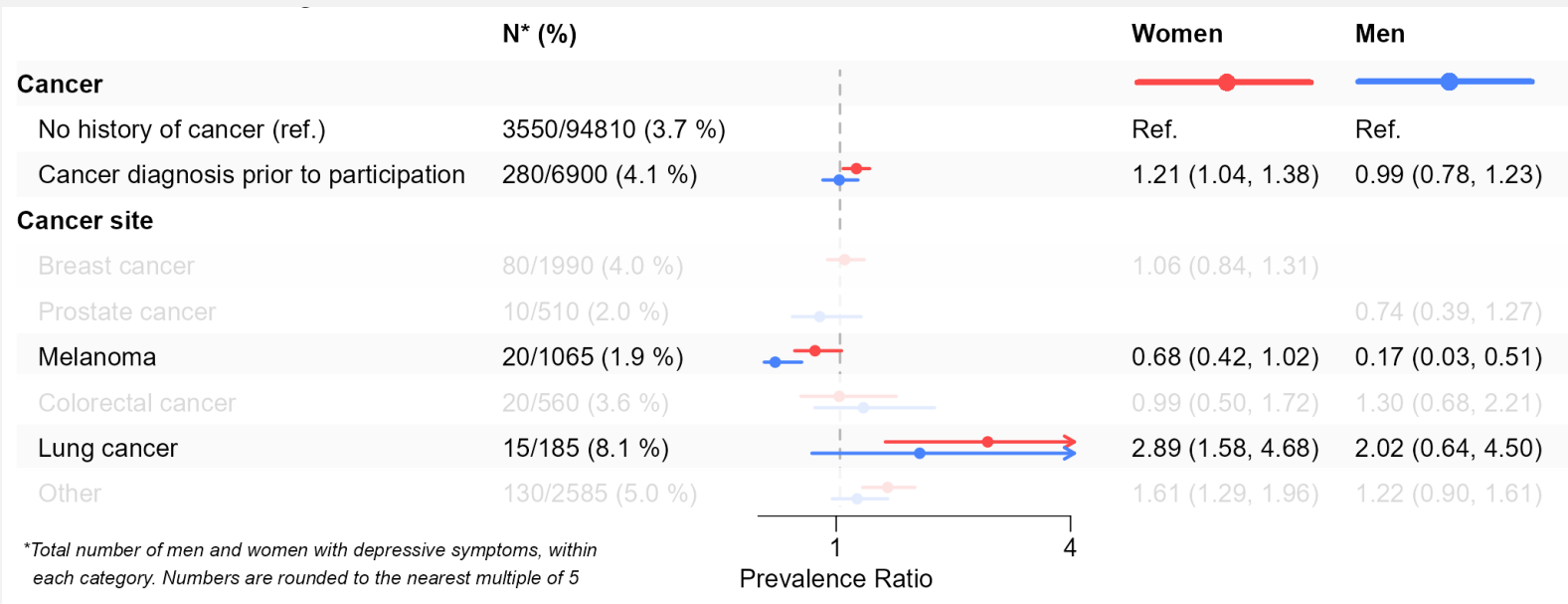




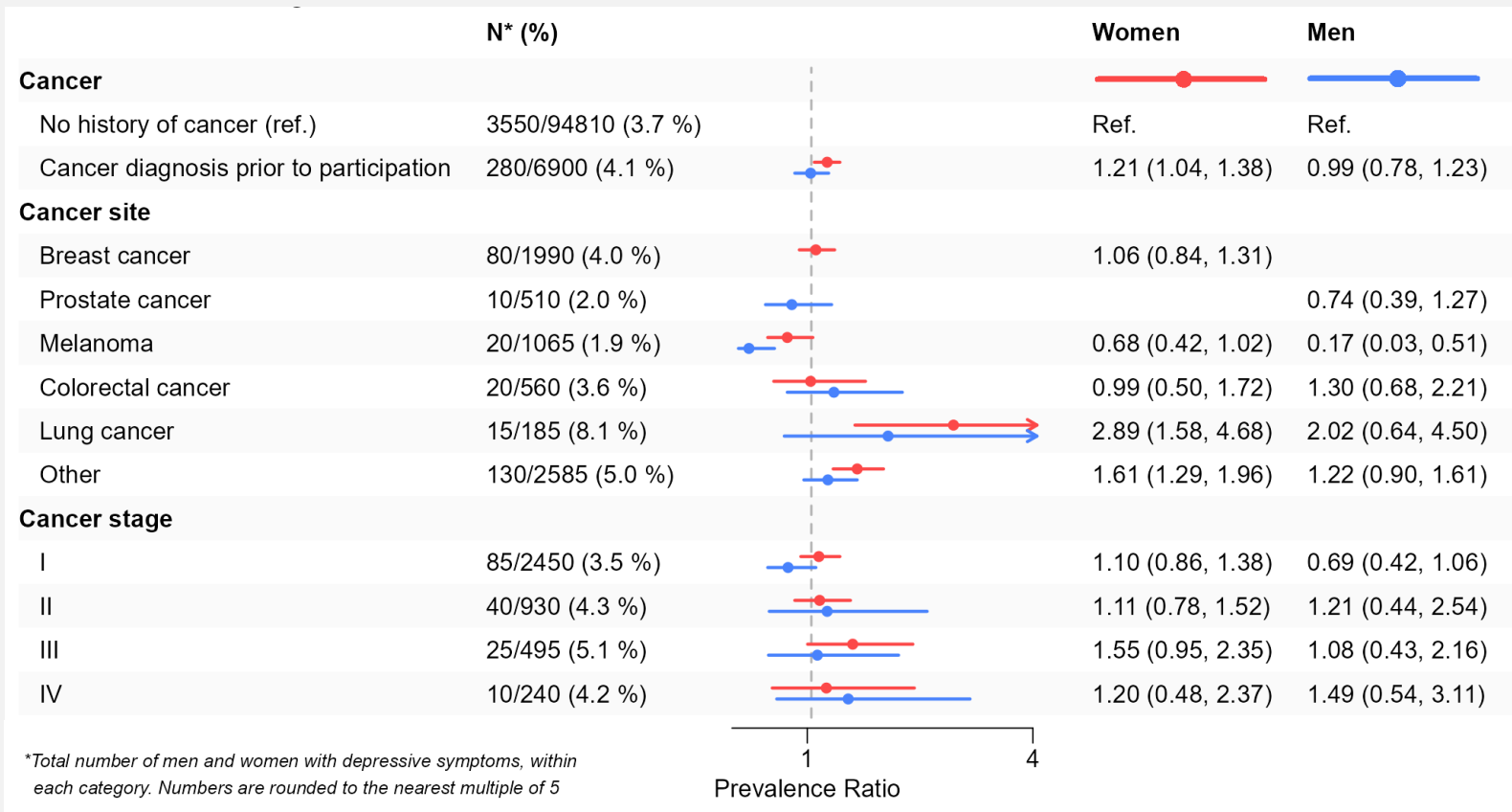
DEPRESSIVE SYMPTOMS



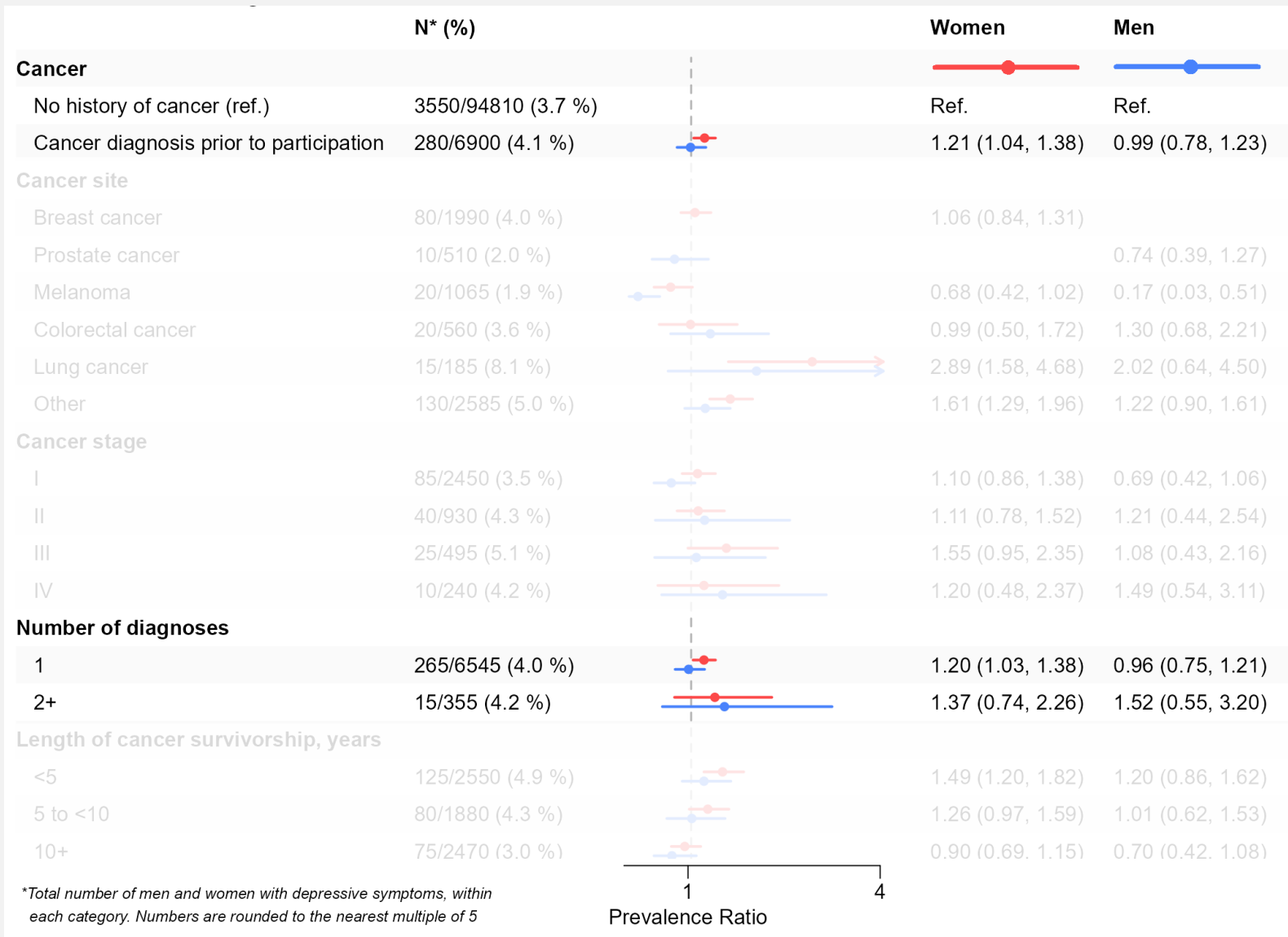
DEPRESSIVE SYMPTOMS



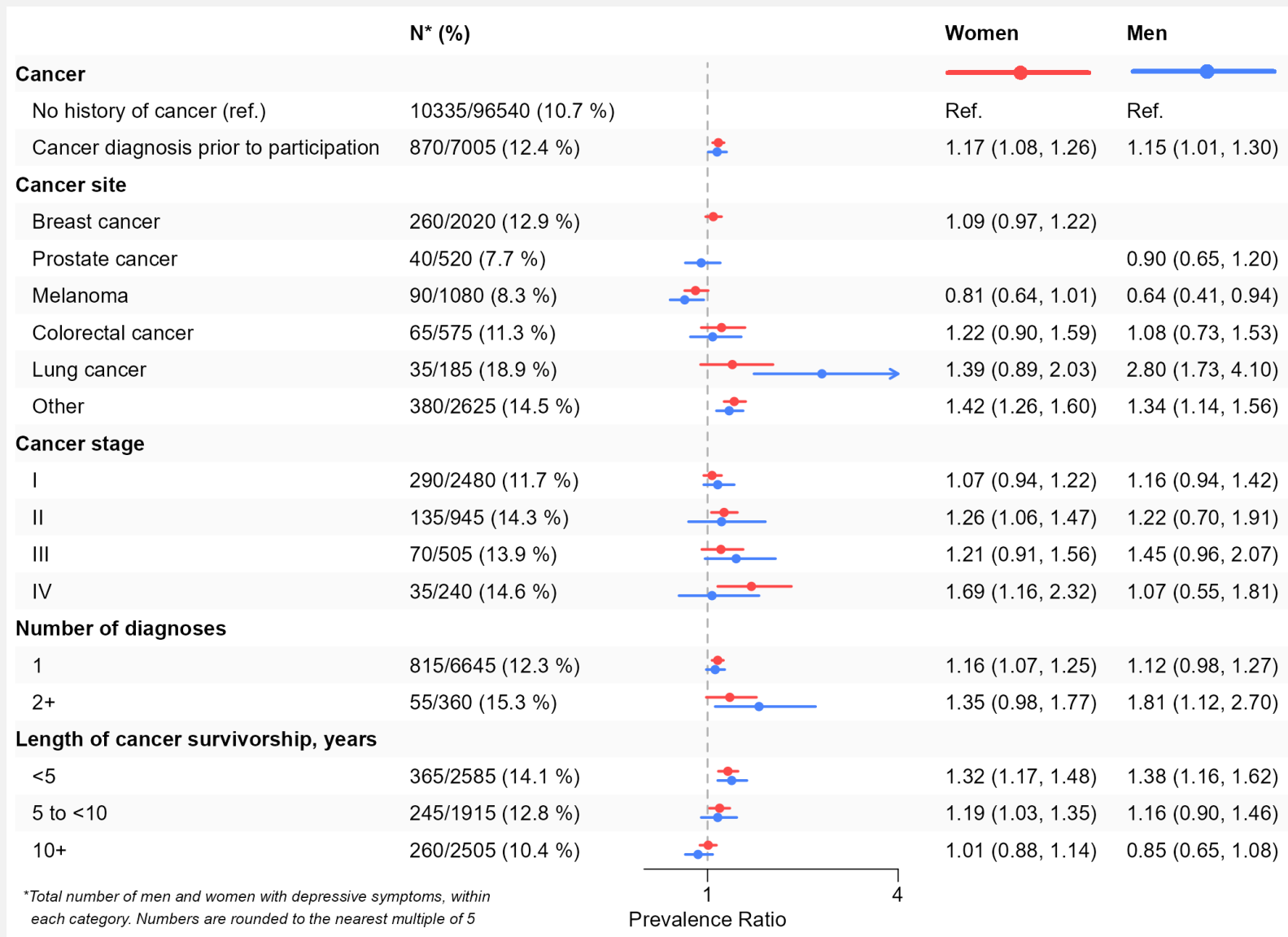
DEPRESSIVE SYMPTOMS



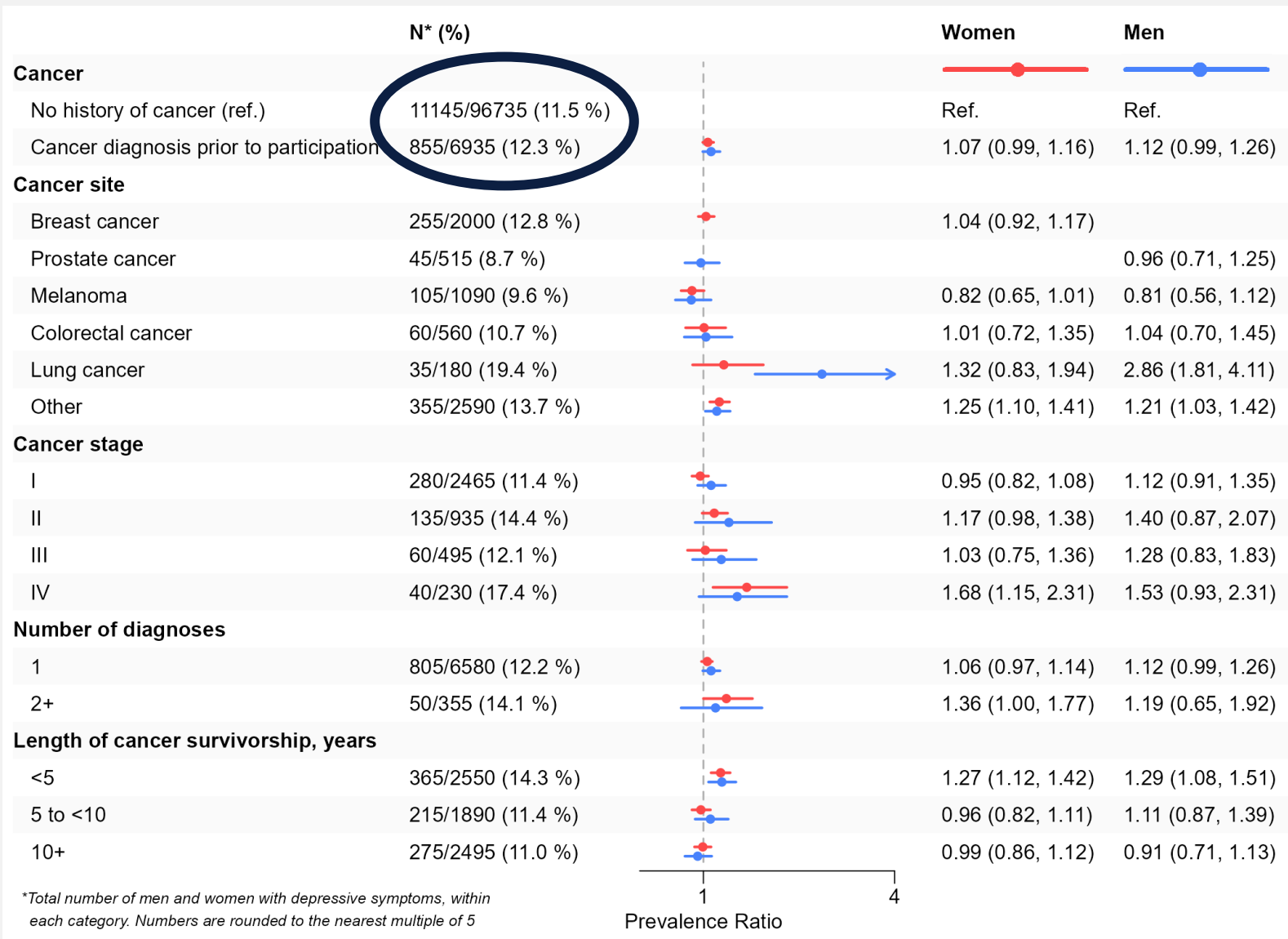
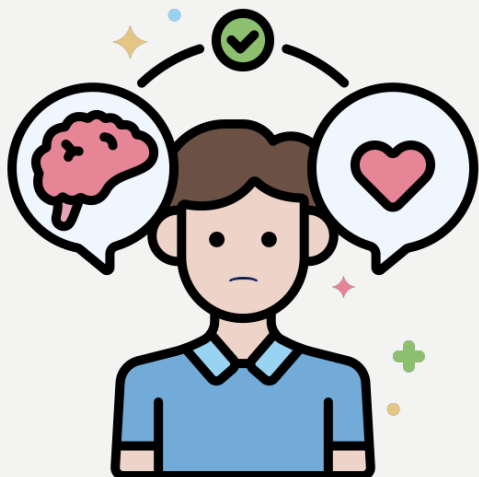
DEPRESSIVE SYMPTOMS



PERCEIVED STRESS



POOR MENTAL HEALTH



LIMITATIONS



No conclusions about the causal relationship between cancer and mental health



No information on changes in mental health over time



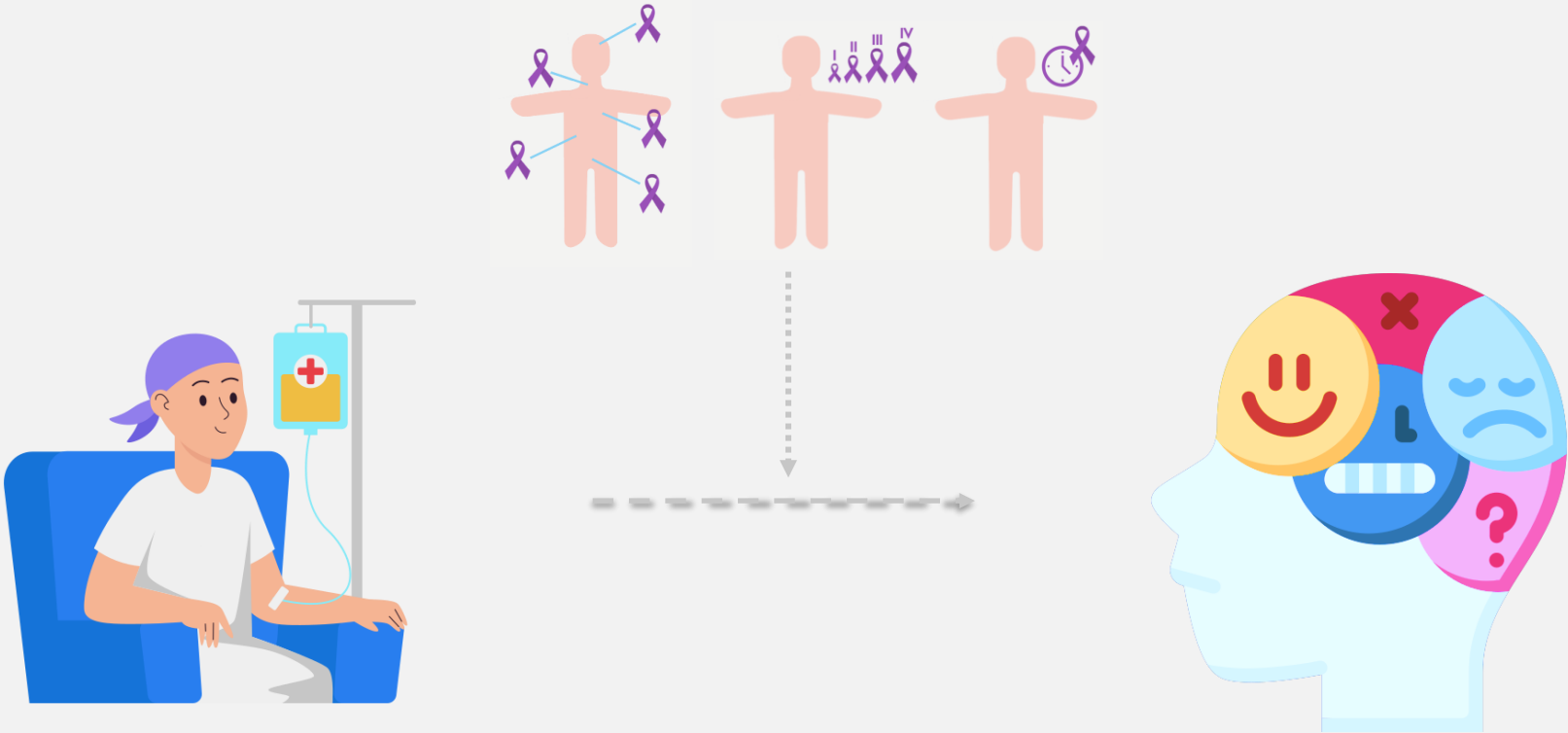
Issues with external validity



Risk of outcome misclassification



CONCLUSIONS



www.kea.au.dk

 cml@clin.au.dk



Thank you to my co-authors:

Caroline M. Lager,¹ Julie A. Schmidt,¹ Oleguer Plana-Ripoll,¹ Anja C. Huizink,² Morten Madsen,¹ Henrik T. Sørensen,¹ Deirdre Cronin-Fenton¹

¹ Department of Clinical Epidemiology, Department of Clinical Medicine, Aarhus University and Aarhus University Hospital, Denmark

² Department of Clinical, Neuro- and Developmental Psychology, Vrije University, Amsterdam, the Netherlands

Funding:

Independent Research Fund Denmark (3127-00027A), Danish Cancer Society (R361-A21036; R372-A21746-23-S44), Torben & Alice Frimodt Foundation, Reinholdt W. Jorck and wife's Foundation, Knud Højgaard Foundation, William Demant Foundation, A. P. Møller Foundation, and Dagmar Marshall's Foundation

 Danish Cancer Society

